



REGENCY  PLACE

Apartment Living, Refined



Hear the quiet



REGENCY PLACE IS...

THE PLACE TO CALL HOME

Located in a quiet, stylish, and refined area of Wilmington, Regency Place is an intimate community of apartment homes as special and unique as you. Each of the 120 units is thoughtfully created with exceptional living in mind.



Created, not merely built

Local renowned developer, The Gutierrez Company, has crafted each floor plan with creative detail and has added exceptional finishing touches you can appreciate. In every kitchen, living space, and bathroom you will find special custom features.



Convenient to I-93 and adjacent to beautifully preserved wetlands, Regency Place is designed to offer convenience and accessibility. Enjoy a shorter commute and at the end of the day, rejuvenate in a peaceful setting.

find your way home

YOUR COMMUNITY:

- Clubhouse with great room
- Inviting green surroundings
- Fitness facility including cardio and weight equipment
- Café area with wireless internet access
- Swimming pool, patio and outdoor grill
- Impeccable landscaping
- Detached garages available
- Pets welcome — breed restrictions apply



KITCHEN APPOINTMENTS:

- All black upgraded appliances including microwave
- Faucet with integrated pull-out sprayer
- Disposal
- Natural maple cabinetry with brushed nickel pulls



IN YOUR APARTMENT HOME:

- Full size, side by side washer/dryer
- Plantation window blinds throughout
- Central heat and air conditioning
- Spacious private balcony or patio
- Walk-in closets with shelving systems
- Bay windows in many homes
- Tray ceilings on top level



BATHROOM FEATURES:

- Tile tub surrounds
- Curved shower curtain rods
- Vanity mirrors with designer light fixtures

FLOOR PLAN OPTIONS

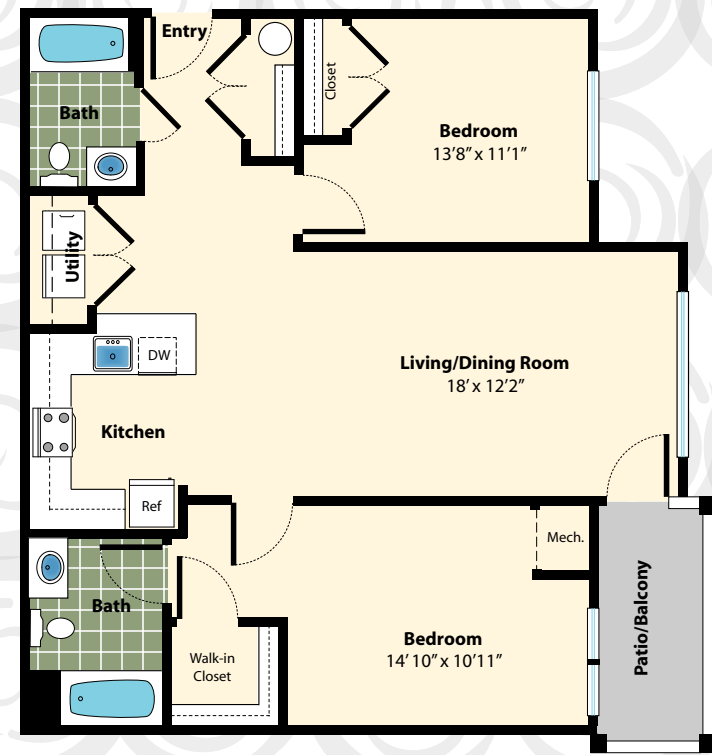
ESSEX

1 BEDROOM / 1 BATHROOM
760 SQUARE FEET



FRANKLIN

2 BEDROOMS / 2 BATHROOMS
1080 SQUARE FEET

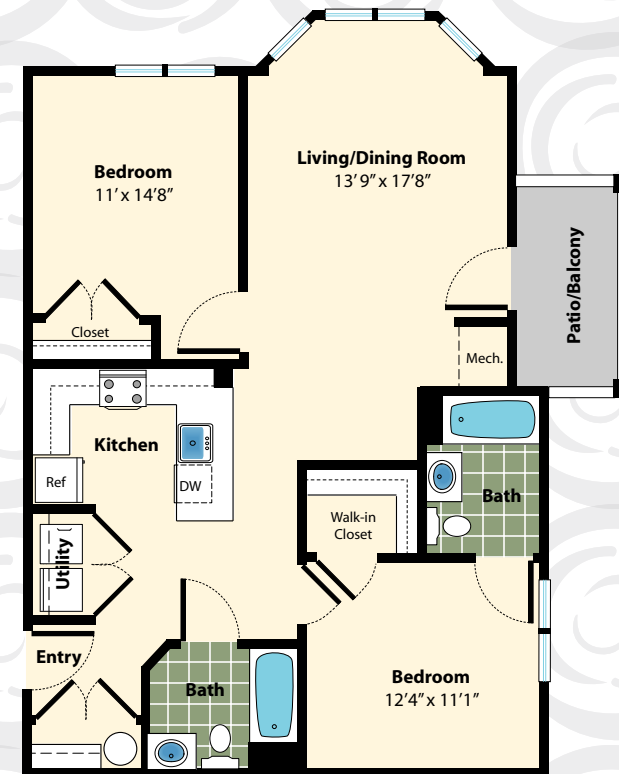


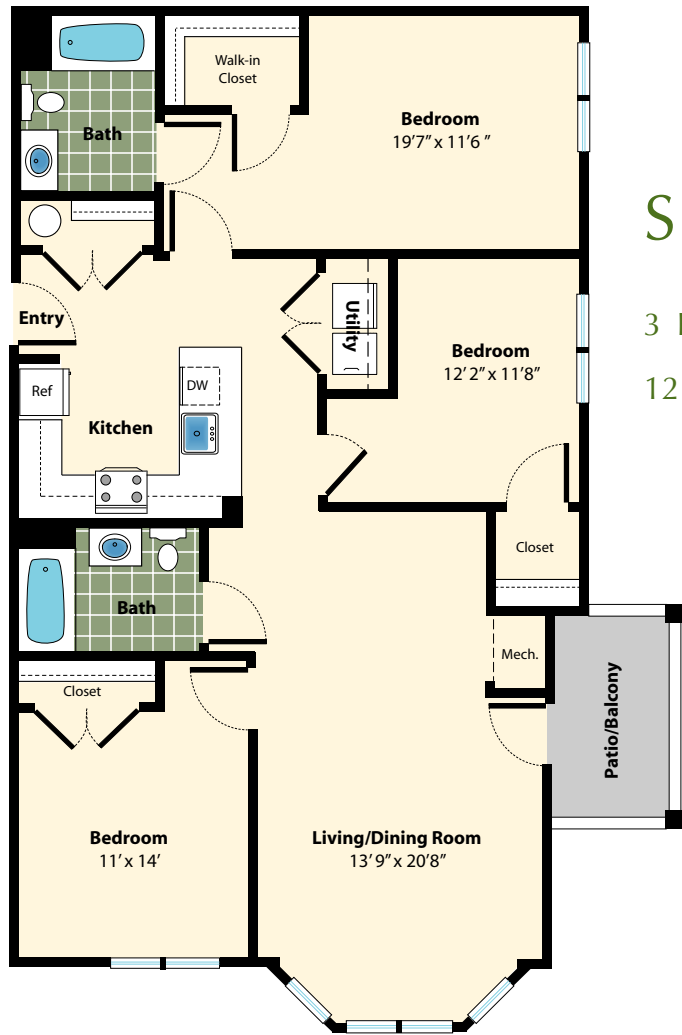
HAMPDEN

2 BEDROOMS / 2 BATHROOMS
1074 SQUARE FEET

NORFOLK

2 BEDROOMS / 2 BATHROOMS
1053 SQUARE FEET





SUFFOLK

3 BEDROOMS / 2 BATHROOMS
1294 SQUARE FEET



SITE PLAN



Regency Place's fabulous location is less than 15 miles from Boston, and minutes from three MBTA commuter rail stations.

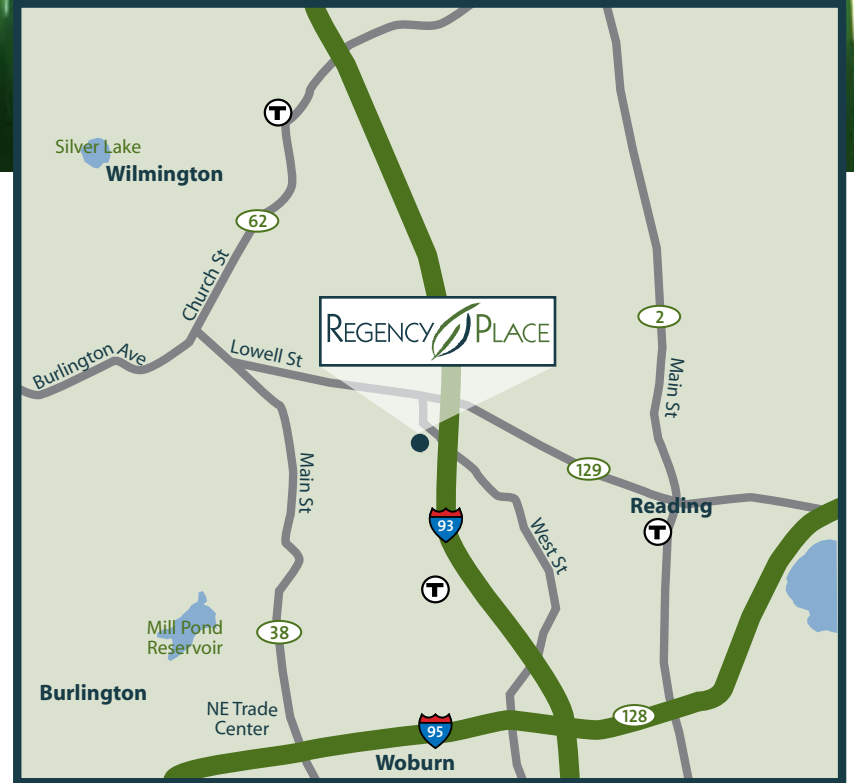
Driving Directions:

From I-93, take Exit 38 for Rt. 129 Reading/Wilmington. Proceed westbound onto Lowell Street. Turn left at the first light onto West Street. Regency Place is less than a quarter mile on the right.



7000 Horseshoe Lane
Wilmington, MA 01887
Phone: 978.658.4960

Email: regencyplace@princetonproperties.com
www.regencywilmington.com



Managed by:

